

# EnviroFence TITAN 5.2™

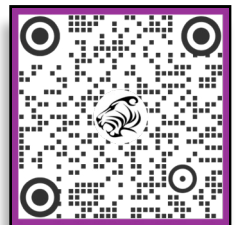
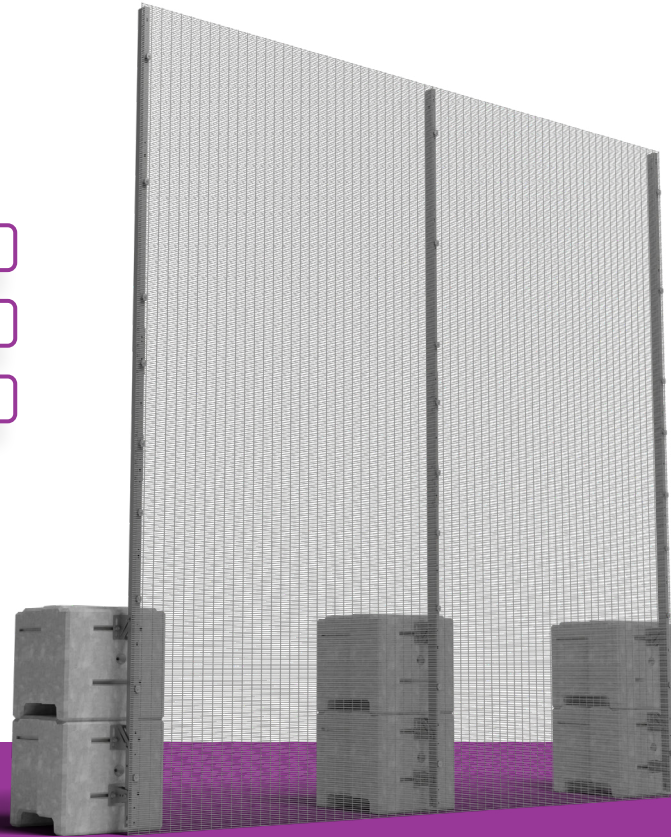
UK's First Net Zero Verified Prison Fencing System



Prisons

National Infrastructure

Data Centres



Want to know more?

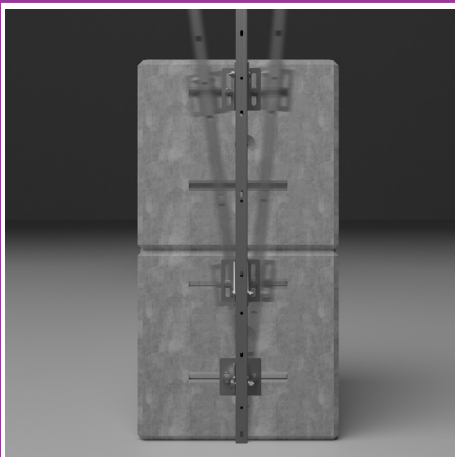
EnviroFence TITAN 5.2™ is a high security rapidly deployable no-dig 5.2m high temporary fencing system designed specifically to meet the standards of temporary fencing required for the prison sector.

Utilising 358 mesh it is the first high security temporary fence to be verified net zero carbon and comes with a site-specific carbon embodiment report for supporting your projects ESG targets.

The system can incorporate a range of security toppings, anti-burrowing protection and matching vehicle and pedestrian gates can be added into the fence line. Pedestrian load options start at 0.36kN/m up to 3.0kN/m and include maximum wind for the location with site-specific temporary works design packs included.

Choose to contract hire or purchase EnviroFence TITAN 5.2™ with our guaranteed buyback.

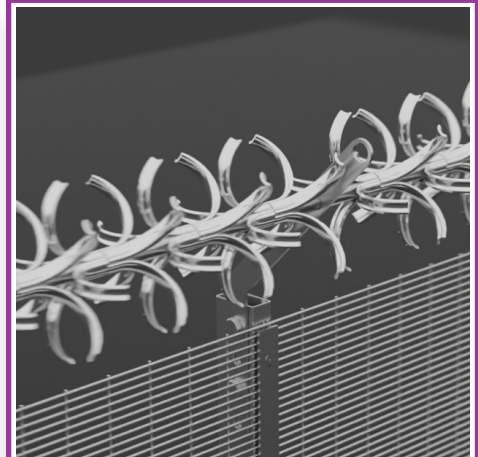
## SYSTEM FEATURES



Fully Adjustable Post



358 Fine-Mesh Profile Panel



Optional Security Toppings

# EnviroFence TITAN 5.2™

UK's First Net Zero Verified Prison Fencing System

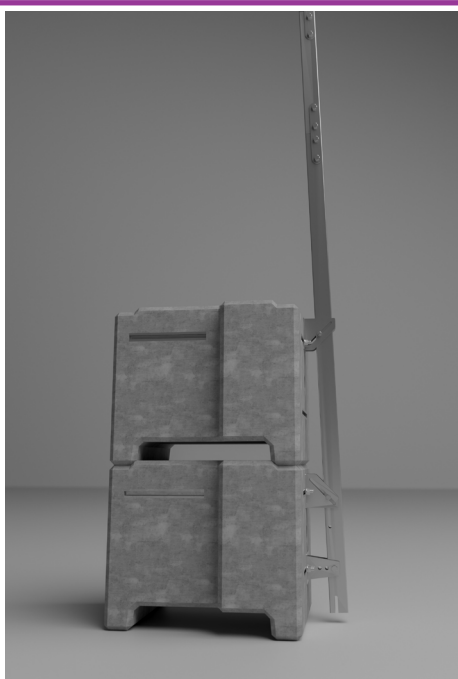


We are so confident in our patent-pending EnviroFence™ range that we have created a series of product videos to showcase each systems unique design features.

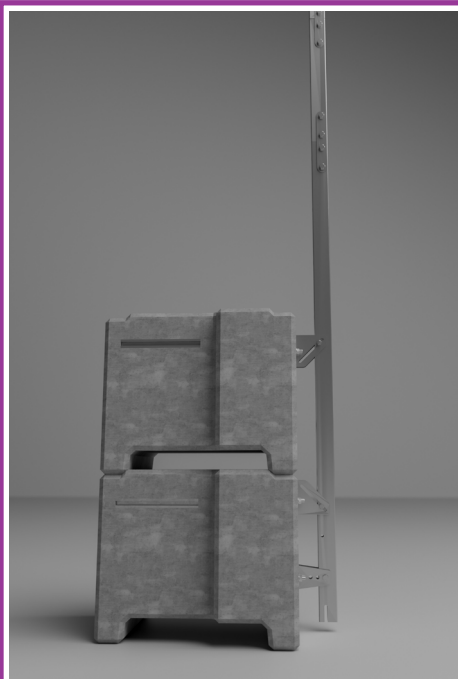
At the heart of the system is its interoperability with our market leading net zero verified EnviroHoard™ system. Utilising key components offers unrivalled operational and commercial benefits.

Pictures are good, but nothing beats watching a video, click to watch 40 seconds of next generation temporary fencing.

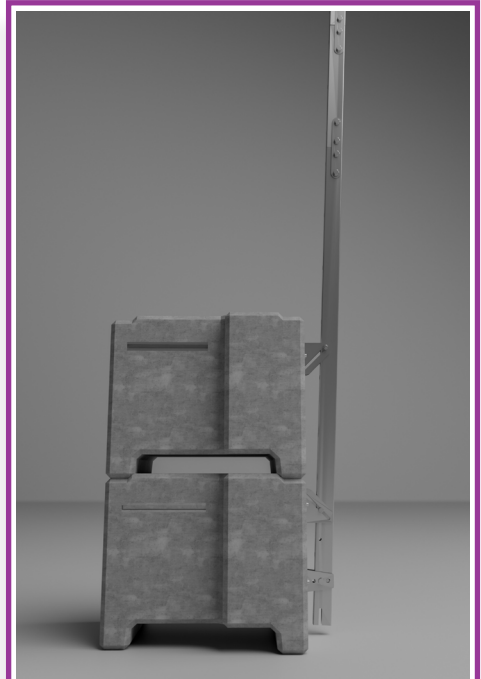
## FULLY ADJUSTABLE POST



Post Angled Back



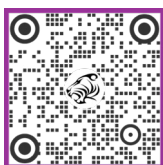
Post Centred



Post Angled Forwards

### Product Technical Data

If you would like more technical information on EnviroFence TITAN 5.2™, or are interested in specifying the system on your next project scan the QR code below.



Q40 Download



**0845 165 1234**

**[www.pantheragroup.com](http://www.pantheragroup.com)**

### Disclaimer

EnviroFence™ should be installed in accordance with the site-specific designs produced for the project. We have taken care to ensure the information on this data sheet is accurate at the time of publication. Panthera Group Ltd reserves the right to change product specification at any time. Please ensure that you have the latest information which can be found on our website or by contacting our team.

Document Reference - PGL\_EnviroFence\_PRISON\_2024rev1