



PANTHERATM

Group Services



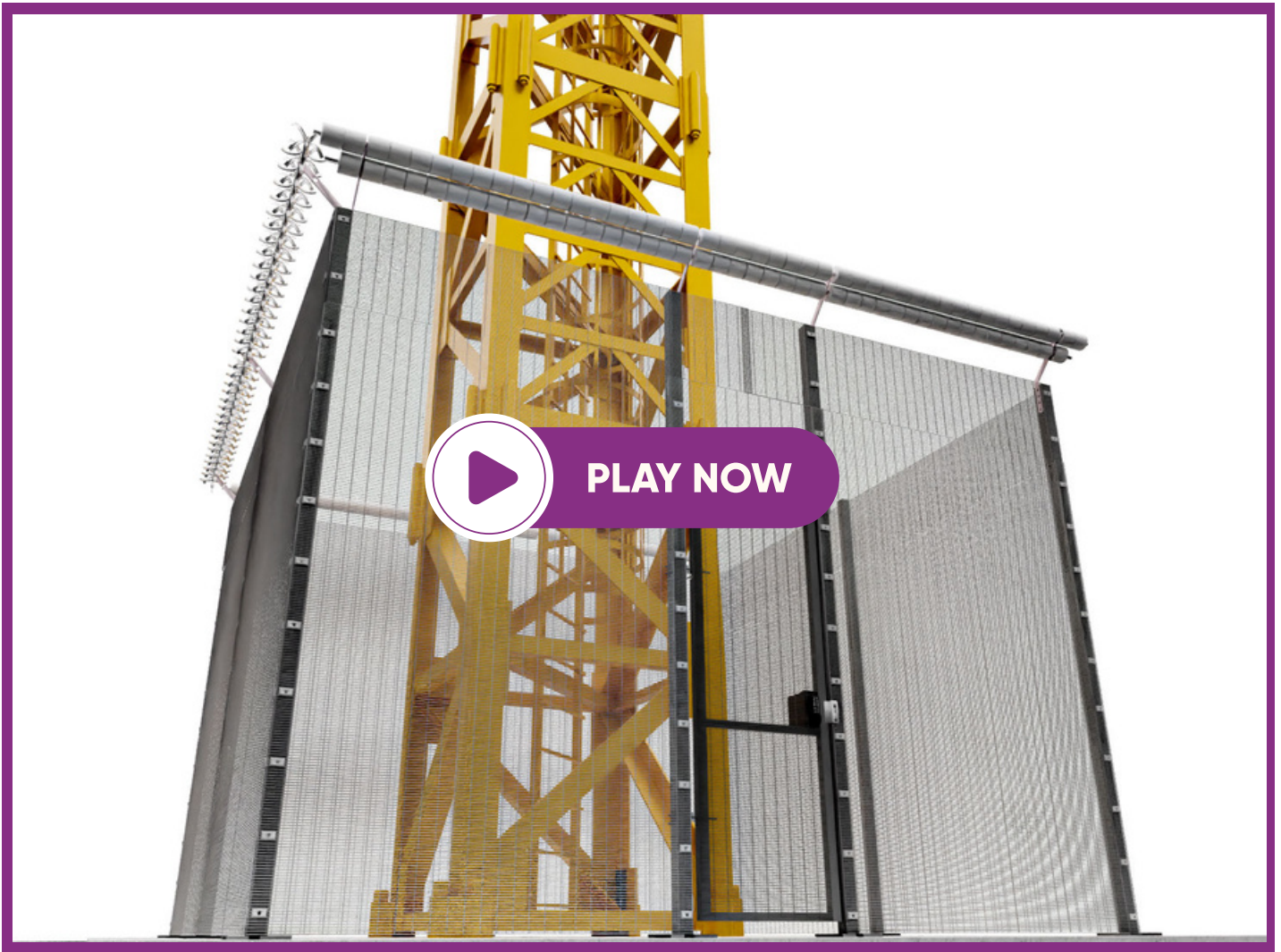
CraneSAFETM
TOWER CRANE PROTECTION

Introducing CraneSAFE™

CraneSAFE™ is a high security fence system designed for the protection of tower cranes. The purpose-made system by Panthera Group has been carefully designed to be independently supported from the tower crane; by creating a gap between the fence line and the crane, **CraneSAFE™** offers optimal security while maintaining the independence of the crane itself.

Modular in its design, **CraneSAFE™** can be supplied as a complete kit or tailored to suit your specific site requirements. Height options are 3.0m and 3.6m, and both come with a range of optional security toppings to increase the protection of the tower crane; the system can also be used to protect hoists, Haki staircases and other vulnerable high risk access points. The unique **CraneSAFE™** post has been designed to speed up the installation, adaption and dismantle of the system while also improving manual handling. It meets all relevant British Standards and guidance documents, and is compliant to all UK wind zones.

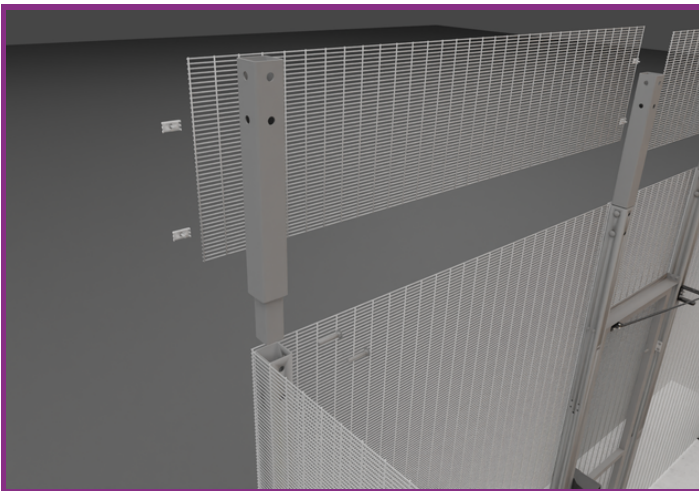
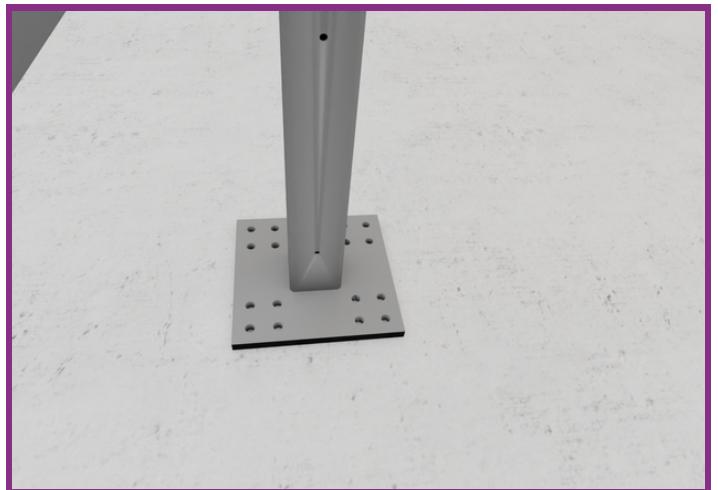
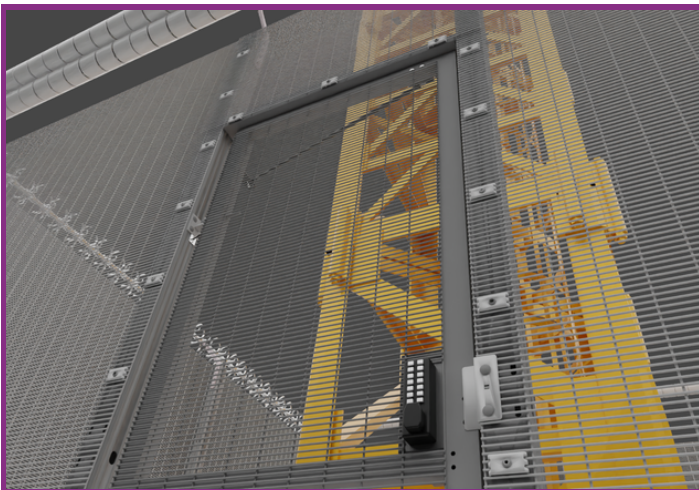
Using **CraneSAFE™** eliminates the use of timber and plywood; unlike traditional plywood tower crane enclosures, **CraneSAFE™** is a zero-maintenance, 100% reusable system that promises zero-to-landfill. A number of procurement options are available including contract hire or purchase with a guaranteed buy back option at the end of the project.



Why CraneSAFE™ ?

CraneSAFE™ is a purpose-made, independently supported high security fence system specifically designed to enhance the protection of tower cranes on construction projects. Its closed-loop, modular design offers improved sustainability, commercial, safety and operational benefits when compared to traditional plywood and standard mesh fence enclosures. The operational benefits include:

- One Day Installation - both kit options and enhancements installed in just one day
- Modular & Reusable Design - reduces future labour and material costs
- Procurement Options - purchase with a buy back option or contract hire
- Zero-to-Landfill - 100% reusable system with our zero-to-landfill promise
- Health & Safety - mesh panels allow full visibility at the base of the crane
- Temporary Works compliant - designed to meet all three UK wind zones
- Security - anti-tamper fixings, cranked security toppings and anti-climb 358 mesh
- Zero Maintenance - hot dip galvanised with no on-going maintenance or downtime



System Options

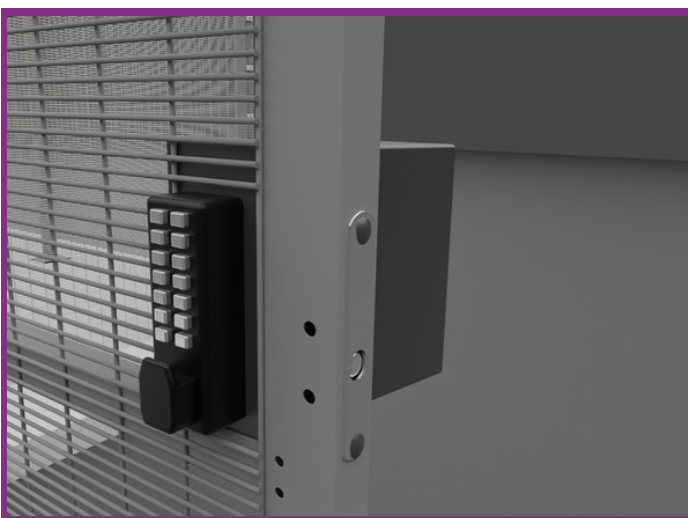
We understand that every project is different. That is why we have designed **CraneSAFE™** to include a range of procurement and system options.

With **CraneSAFE™**, securing your tower crane has never been easier. A range of procurement options are available - select contract hire or purchase with a buy back option. We have carefully designed two standard kits 4m² or 6m² to choose from, or for something more bespoke, customers can contact a member of our specialist team who will provide a tailored, site specific quotation to suit each projects' requirements.

As standard, kits include:

- Single high security access gate with single-sided Gatemaster digi-lock
- Overhead gas closer
- Security shroud
- Wired gate restrainer to comply with BS EN 12604:2017

Product Code	System Type	Size m ²	Height m	Procurement Options
CS-4M-3.0	Kit	4m ²	3.0	Hire or Sale
CS-6M-3.0	Kit	6m ²	3.0	Hire or Sale
CS-4M-3.6	Kit	4m ²	3.6	Hire or Sale
CS-6M-3.6	Kit	6m ²	3.6	Hire or Sale
CS-BS-3.0	Bespoke	Any	3.0	Hire or Sale
CS-BS-3.6	Bespoke	Any	3.6	Hire or Sale

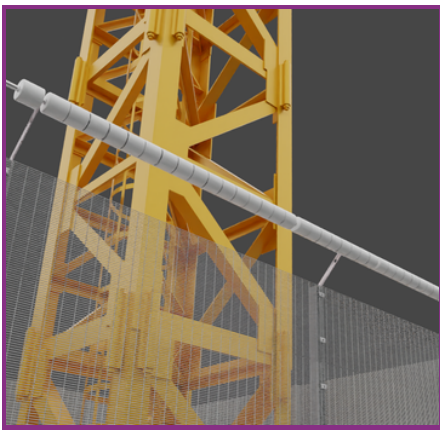


Enhanced Security Options

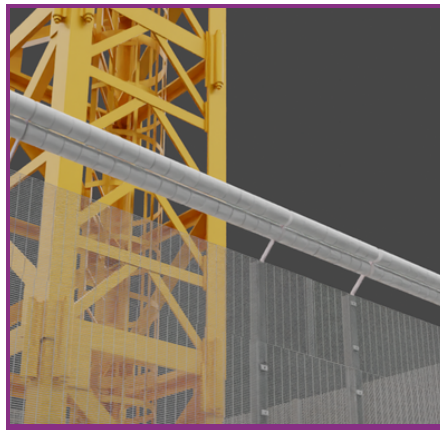
To increase security and mitigate Health & Safety risks, **CraneSAFE™** is available with a range of optional security toppings to increase the protection of your tower crane from intruders and thrill seekers, which is fast becoming a serious issue across many construction projects.

All security options are classed as non-aggressive. Our single and double uPVC rollers are visually less aggressive and are a perfect option to increase security without the risk of harming or injuring a potential intruder.

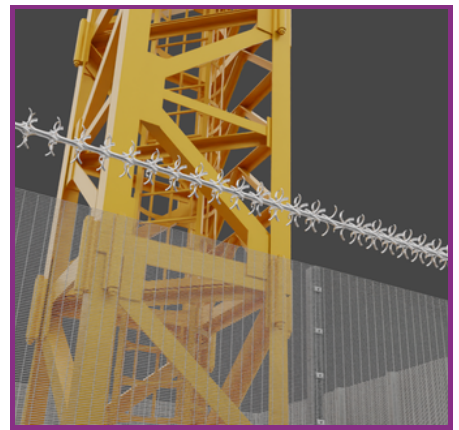
CraneSAFE™ is uniquely designed to optimise security on construction sites. All optional security toppings are fitted to the systems bespoke bolt-down posts using galvanised steel cranked brackets that can be installed at either 3.0m or 3.6m high. The cranked brackets increase security by making it more difficult for any intruder to gain access to the tower crane.



Single uPVC Rollers



Double uPVC Rollers



Aluminium Rollers

Why not add CraneCAM™?

CraneCAM™ has been designed to work alongside **CraneSAFE™**. **CraneCAM™** offers HD quality images during day or night by using advanced Artificial Intelligence (AI). When an activation is confirmed, the system provides a local visual and audible warning, and can alert the site contact using a mobile network, or alert our NSI Gold monitoring station.

Product Code	System Type	Size m ²	Height m	Procurement Options
CS-SR-4M / CS-SR-6M	Single uPVC Rollers	4m ² / 6m ²	3.0 / 3.6	Hire or Sale
CS-DR-4M / CS-DR-6M	Double uPVC Rollers	4m ² / 6m ²	3.0 / 3.6	Hire or Sale
CS-VG-4M / CS-VG-6M	Aluminium Rollers	4m ² / 6m ²	3.0 / 3.6	Hire or Sale
CS-CC-01	CraneCAM™	n/a	n/a	Hire